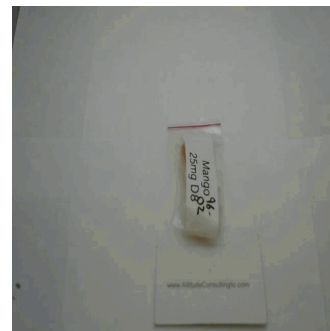




Customer: **Mint Wellness**
Customer Sample ID: **25mg Mango - #200923MWM**
Laboratory Number: **20K0096-02**
Servings per Container: **4.3238**



Cannabinoid Profile

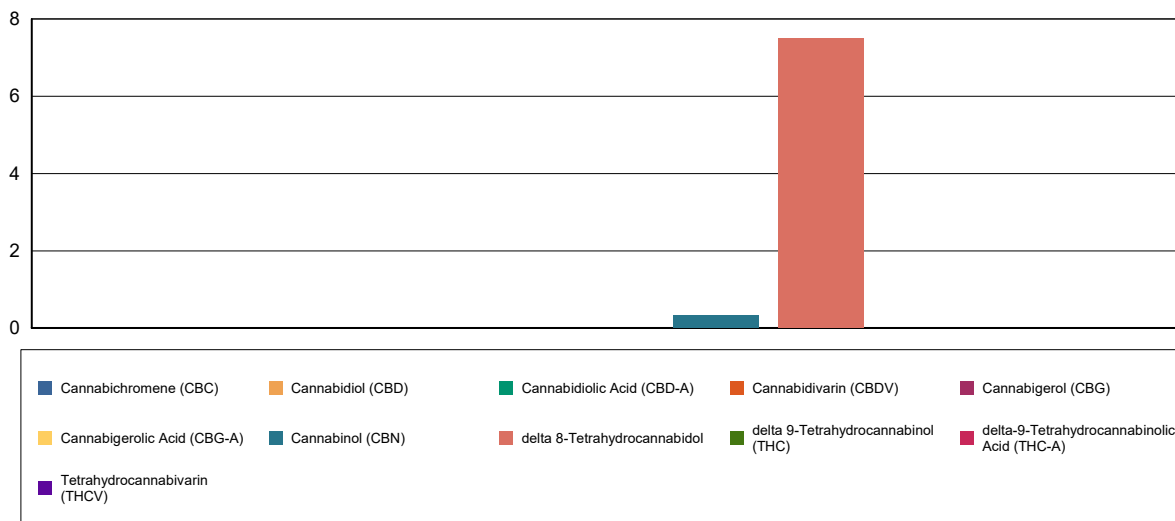
Extraction Technician: DF
Analytical Chemist: CB

Extraction Date(s)	Analysis Date(s)
11/5/2020	11/5/2020

Cannabinoids (HPLC)			Results	
	LOD (mg/g)	%	mg/g	mg/gummy
Cannabidivarin (CBDV)	<0.006	ND		
Cannabidiolic Acid (CBD-A)	<0.006	ND		
Cannabigerolic Acid (CBG-A)	<0.006	ND		
Cannabigerol (CBG)	<0.006	ND		
Cannabidiol (CBD)	<0.006	ND		
Tetrahydrocannabivarin (THCV)	<0.006	ND		
Cannabinol (CBN)		0.03	0.339	1.46
delta 9-Tetrahydrocannabinol (THC)	<0.006	ND		
delta 8-Tetrahydrocannabinol		0.75	7.49	32.4
Cannabichromene (CBC)	<0.006	ND		
delta-9-Tetrahydrocannabinolic Acid (THC-A)	<0.006	ND		
Cannabinoids Total		%	mg/g	
Max Active THC		0.00	0.00	
Max Active CBD		0.00	0.00	
T.Active Cannabinoids		0.03	0.34	
Total Cannabinoids		0.78	7.83	

Following USDA guidelines on uncertainty, Altitude Consulting's uncertainty are calculated for CBDa and CBD at +/- 4%. The uncertainty for THCa and THC are +/- 5%. This implies the range for a 10% value of CBD to be 9.6-10.4%. The uncertainty range for a 0.30% value of THC would be 0.28-0.32%. The measurement uncertainty is calculated using a coverage factor of 2.

Cannabinoid (mg/g)



Reporting Limits will vary based on sample extraction weight used for the analysis.

Altitude Consulting, LLC utilizes NIST traceable Reference Standards and Certified Reference Material to calibrate analytical instruments along with proven analytical methods. The methods are applied in the most ethical manner following good laboratory practice guidelines. The results of this report are based solely on the sample submitted and cannot be reproduced.